



KAIMANN

AUCTIONS & REAL ESTATE

LLC



CHARLIE

PUBLIC AUCTION

Moving to a new job out of state, we will sell all the following on:

SATURDAY, JUNE 28, 2014

Beginning at 10:00 A.M.

Location: 80 Serenity Lane, Troy, MO 63379

DIRECTIONS: From the intersection of Hwy. 47 & 61, go West on Hwy. 47 2 miles to LEFT on Hwy. J, go 3 miles to LEFT on Hwy U, go 1.3 miles to right on Spielhagen Rd., go 1 mile to RIGHT on Gibison Rd., go ½ mile to LEFT on Knies Ct. to LEFT on Serenity Lane to #80 Serenity Ln. on LEFT OR from Hwy 61 at Crossroads Exit, go WEST 1.2 miles on Hwy. U to LEFT on Spielhagen Rd. and follow directions above. WATCH FOR KAIMANN AUCTION SIGNS DAY OF SALE!

2002 CHEVY TAHOE - To Be Sold at 12:00 NOON



2002 CHEVY TAHOE 350 V8, 4x4, 185,XXX miles, runs good!

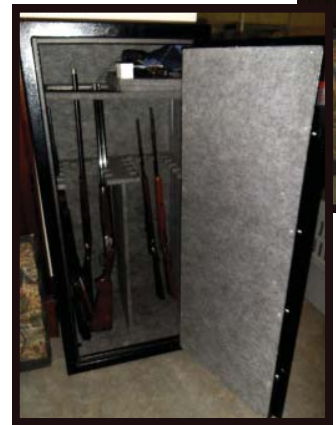
GUNS, SUPPLIES & GUNSAFE

TO BE SOLD AT 12:00 NOON - IMMEDIATELY AFTER VEHICLE



Winchester Super X2 competition grade 28" 12 ga. w/extended tube & screw in chokes
Winchester Super X2 competition grade 30" barrel w/extended tube & screw in chokes
Browning 12 ga. A-5 Belgium shotgun St. Louis, 30" full
Remington 870 pump, Wingmaster 20 ga. 28" barrel
Marlin Model 795, 22LR black synthetic rifle
Marlin Model 60W, 22LR rifle w/scope
Sears & Roebuck 20 ga. Mod 282 single shot shotgun
Stoeger 410 ga. double barrel shotgun
Sears Model 25 22LR rifle
Fraser 25 cal. Semi-auto pistol
Lot hard & soft gun cases
Armory 22 Gun Safe, fire proof
Wooden gun case
6 Cases Fiocchi 12 ga. shotgun shells
Approx. 10 cases assorted shells
Approx. 15 rods & reels, lot tackle boxes

Note:
All FFL rules & regulations apply



LAWN MOWER & TOOLS

Gravelly
48" Zero-turn
mower, 24hp,
same as new,
114 hours

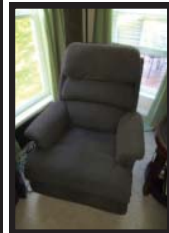
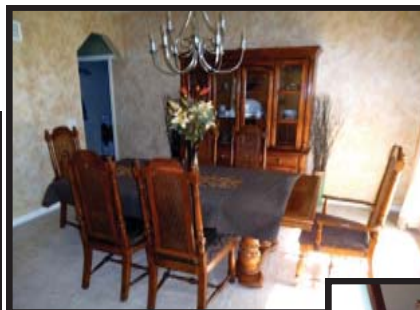
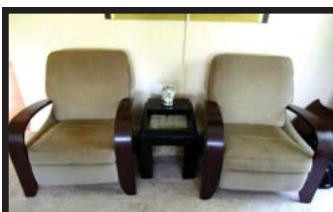


Craftsman roll-a-round tool chest
Lot wrenches & sockets
Torque wrench
Shop vac
Stihl MS290 chainsaw
Lot electric hand tools
Stepladder
Small paint scaffolding
Lot hardware
Lot hand tools
Yard sprayer
Folding saw horses
Wheelbarrow
Lot shovels, hoes & rakes
2 wheel cart



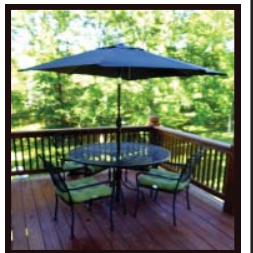
HOUSEHOLD & MISC.

Maple dining room set - table, 6 chairs & china cabinet-very nice
Storage cabinet
Frost free upright freezer
Lot Christmas deco. & 7 ft. lighted tree
5 Maple spindle back chairs
Oak dresser
Round coffee table
32" Flat screen TV
Hitachi 42" TV
Temper-Pedic King size bed & frame
Double bed complete
China, service for 8 plus side dishes
Lot vases & glassware
10' L-shape couch & 2 chair set
Recliner
Epic treadmill, like new
End table set
Assorted small chairs
Console stereo
Vizio 42" Flat screen TV
One-man wardrobe
Dresser & nightstand
Small couch
Lazy Boy recliner
Love seat
Metal shelving
Large desk & bookcase



YARD FURNITURE

Patio table w/umbrella
Smoker-BBQ pit
Cast Iron benches
Cat house



OWNER: JOE & CONNIE STEENBERGEN

TERMS: CASH OR GOOD CHECK WITH CURRENT PHOTO ID. OUT OF STATE ID AND CHECKS MUST INCLUDE A BANK LETTER OF CREDIT. ALL BUYERS WILL BE PHOTOGRAPHED. ALL ITEMS STAND SOLD AS IS, WHERE IS. OWNER AND AUCTION PERSONNEL NOT RESPONSIBLE FOR ACCIDENTS OR THEFT. ALL ANNOUNCEMENTS MADE DAY OF SALE SUPERSEDE ANY ADVERTISING.



AUCTIONEER - CHARLIE KAIMANN & ASSOCIATES
OFFICE - 636-462-SALE (7253)

To view all sale pics or to join our e-mail list visit our website at:
www.CALLKAIMANN.COM